



SPAND Superspeciality Hospital[®]
caring life

A Unit of



ACROLS HEALTH
precision value & health team



Acrols Health Pvt Ltd is a healthcare group formed by eminent Doctors of the city which came in the form of hospital chain in entire Jharkhand. Acrols Health also enshrine belief in providing a sustained and well - maintained personal health status in cordial terms as the most essential element in contributing towards a person's recovery and well – being.

In this Vision and Mission **SPAND Superspeciality Hospital**, 150 bedded, Primary and Secondary care Hospital, including day care facilities scientifically planned and strategically located at **Rameshwaram, Opp. ITDR Building, Gambhariya, Aditypur, Jamshedpur-832108**, NH 18, under District: Saraikela-Kharsawan . HOSPITAL will be equipped with state of the art technologies and most advanced diagnostic tools sourced from top of the line global manufacturers backed by dedicated specialists with national and international expertise in the field of medical science.



The need for an integrated super-specialty health care facility in Jharkhand has been acutely felt over the last few decades. Especially in Saraikela-Kharsawan so in view of the communication barriers, nature of diseases, time and financial constrains of the rapidly growing population. SPAND Superspeciality Hospital has been envisioned to create a national model health care through relentless pursuit & unparalleled quality, entailing the finest medical skills combined with compassionate patient care".

SPAND Superspeciality Hospital's medical team aims at promoting patient safety, precision value, affordability, quality assurance, holistic healthcare, under the guidance of trained health professionals of the nation with international expertise, responsive to the needs and expectation of the local community and the society under one roof.

Our Vision

To provide compassionate, accessible, high quality, cost effective healthcare to one all.

- 1) To serve with a patient's first motto and to work towards a patient-centered care.
- 2) To develop, share and apply new knowledge and technology in the delivery of patient care through research and technology integration.
- 3) To play an active role in promoting and improving health within our community and to build a strong, integrated system for regional health-care delivery.
- 4) To hold ourselves accountable to high standards those are observable, measurable and apply to all departments and employees of the hospital.
- 5) To be the centre of excellence for medical research and academics.
- 6) To cultivate an environment of trust, honesty, mutual respect, equality, and ethics.
- 7) To work continuously to improve medical care to sustain and further improve clinical outcomes, patient safety & patient satisfaction.

Our Mission

To bring healthcare of International standards to this region, to evolve as a premier hospital in the country and to TOUCH the lives of the people we serve through excellence in clinical care, quality and commitment.

- 1) Equipped with modern infrastructure and advanced medical technology to support high-quality healthcare delivery.
- 2) Adopting a collaborative approach that involves multiple medical specialties working together to provide comprehensive and integrated care
- 3) Empowering patients with knowledge, information, and involvement in their healthcare decisions for a more patient-centric experience.

Accommodation



GENERAL WARD



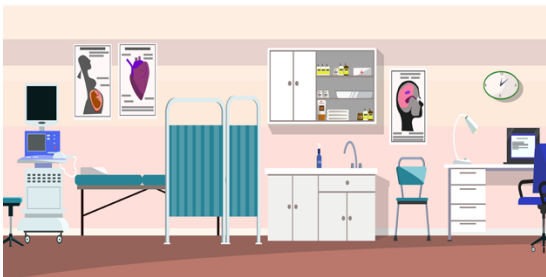
4 BEDDED ROOM



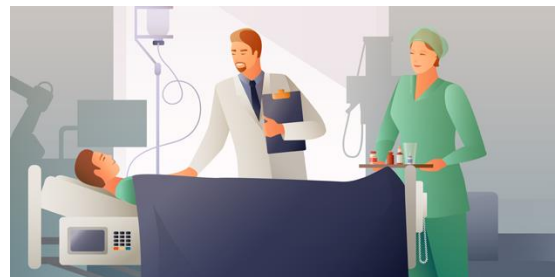
TWIN BED ROOM



SINGLE BED ROOM



DELUXE ROOMS & SUITS



CRITICAL CARE



OPD SERVICES

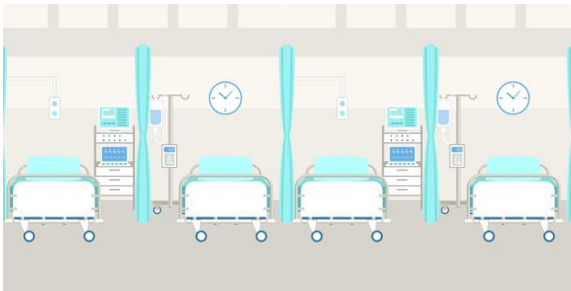
Accommodation

General Ward



Attendant Sitting chair
(as per NABH norms)

4 Bedded Room



4 Bedded Room: Our 4-bedded rooms have been designed with your personal space in mind, for a comfortable stay.

Room Amenities: Wardrobe, Visitor Sofa cum bed Shared, bathroom, Towels

Twin Bed Room



As shared rooms with modern amenities, our 2-bedded rooms have been designed with your personal peace

Room Amenities :Wardrobe, Attendant Bed, Flat-screen TV, Shared bathroom, Towels

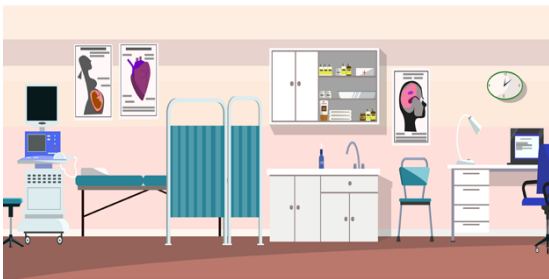
Single Room



Our single rooms exude warmth and understated class so you can enjoy a peaceful recovery with no distractions.

Executive Rooms: Room Amenities: In-room safe with lock and key, Wardrobe, Writing desk, Flat-screen TV, Visitors sofa cum bed, Attached bathroom, Towels

Deluxe Rooms & Suites



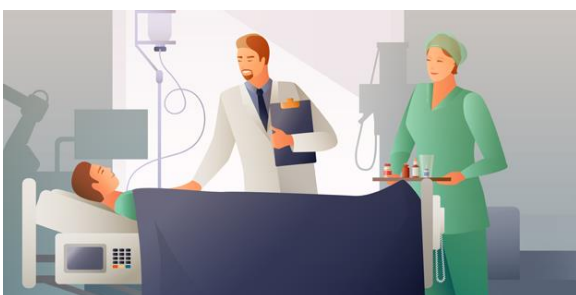
Room Amenities : In-room safe with lock and key, Wardrobe, Writing desk, Two Flat-screen TV, Visitors sofa, Extra bed for visitors, Attached bathroom, Towels, Slippers, Toiletry Kit, Electric Tea Cattle, Refrigerator, Microwave.

OPD Services



Our OPD offers general consultations with experienced doctors who provide personalized medical advice, perform examinations, and address common health concerns.

Critical Care Unit



MICU,NEUROICU,NICU,HDU,EMERG
ENCY,DIALYSIS..

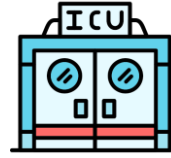
Centre of Excellence Services



ACCIDENT & EMERGENCY SERVICES



CRITICAL CARE & TRAUMA SERVICES



INTENSIVE CARE UNITS (ICUS)



RADIOLOGY SERVICES



GENERAL AND SPECIALTY SURGICAL SERVICES



LABORATORY/ PATHOLOGY SERVICES



AMBULANCE SERVICES



OPD SERVICES



DIALYSIS SERVICES



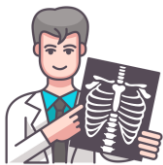
BURNS & WOUND CARE



ANESTHESIOLOGY & PAIN MANAGEMENT



TRANSFUSION MEDICINE



INTERVENTIONAL VASCULAR RADIOLOGY



OPHTHALMOLOGY



PSYCHIATRY & MENTAL WELL-BEING



DERMATOLOGY & VENEREOLOGY



PALLIATIVE MEDICINE



IPD SERVICES



DIET SERVICES

Speciality

1. NEONATES & PEDIATRIC SPECIALTY CARE
2. NEONATAL & PEDIATRIC SURGERY
3. OBSTETRICS & GYNECOLOGY
4. INFERTILITY & IVF
5. INTERNAL MEDICINE
6. PULMONOLOGY
7. NEUROLOGY & NEURO SURGERY
8. NEUROPHYSIOLOGY
9. GASTROENTEROLOGY & HEPATOLOGY
10. GI SURGERY & BARIATRIC SURGERY
11. NEPHROLOGY
12. DIABETOLOGY & ENDOCRINOLOGY (SURGICAL)
13. UROLOGY (OPEN, LASER & LAPAROSCOPIC)
14. MINIMAL ACCESS LAPAROSCOPIC SURGERY
15. CARDIOLOGY (NON INVASIVE & INTERVENTIONAL)
16. CARDIOTHORACIC AND VASCULAR SURGERY (CTVS)
17. ORTHOPEDIC, SPINE & JOINT REPLACEMENT
18. ENT, NECK & HEAD SURGERY
19. ONCOLOGY & ONCOLOGY SURGERY
20. CLINICAL HEMATOLOGY
21. REHABILITATION & PHYSIOTHERAPY
22. MEDICAL YOGA THERAPY

Promotor



Dr. Fateh Bahadur Singh

Director Cum Chairman

**MBBS, M.S.(Surgery),
M.Ch. (Neurosurgery)**

**Flat No. NO-03, K- Road, Avenew
Tower, Bistupur, Jamshedpur-
831001; Mob. No.: 9431113245**

Experience

- 1. Senior Consultant & HOD, Deptt of Neurosurgery at Curesta Global hospital, Ranchi**
- 2. Senior visiting Consultant at Apollo, Kolkata**
- 3. Total 33 years of experience in Neuro Surgery and attached with reputed instutuation.**
- 4. Planned & developed Deptt. Of Neurosurgery at Bokaro General Hospital, Bhopal Memorial Hospital, Tata Main Hospital, Medica Hospital, Curesta Global Hospital while working as HOD – Neurosurgery.**

Promotor



Dr. Ram Kumar

Director Cum Vice-Chairman

**MBBS, MD (General Medicine).
Diabetologist**

**Hn.- 1888, Gaytri Niwas,
Adityapur, Jamshedpur 831013;
Mob: 9204572030**

Experience

- 1. Consultant Deptt. of Medicine & Nephrology in Medical Hospital, Jamshedpur**
- 2. Consultant and incharge Critical care Medicine at Medica Hospital, Jamshedpur**
- 3. Director – Citi Diabetes and Multispeciality Clinic, Jamshedpur**
- 4. Senior Consultant - Department of Internal medicine and diabetes at Meditrina Hospital, Jamshedpur**
- 5. Visiting consultant at BNH, Jamshedpur**

Promotor



Mr. Birendra Kumar Pandey

Director Cum CEO

Post Graduate (M.Sc. in Math's),
PG Diploma in Marketing
Management (IGNOU),
Executive Programme in Healthcare
Management (EPHM), IIM Lucknow

Hn.- 1888, Gaytri Niwas, Adityapur,
Jamshedpur 831013;

Mob: 9204572030

Experience

- 1. Significant experience in launching superspeciality hospitals**
- 2. Launched 300 bedded Bhagwan Mahawir Medica Hospital Ranchi**
- 3. Launched 100 bedded Medica Kantilal Gandhi Hospital at Jamshedpur.**
- 4. More than 12 years of strong, decisive managerial leadership in well known 500 bedded organizations Medica Superspecialty Hospital and 350 bedded The Mission Hospital, Durgapur**
- 5. Experience in Organizational, administrative & Operations**

The SPAND logo consists of a central red circle containing a white stylized 'S' and 'H' intertwined. This is surrounded by four colored petals (yellow, purple, blue, green) and four black dots at the corners.

SPAND Superspeciality Hospital[®]
caring life



**902, Rameshwaram, Opp. ITDR building, Shridungri,
Gambhariya, Adityapur, Jamshedpur, 832108.**

director@acrolshealth.com

6207989998 / 9546721999